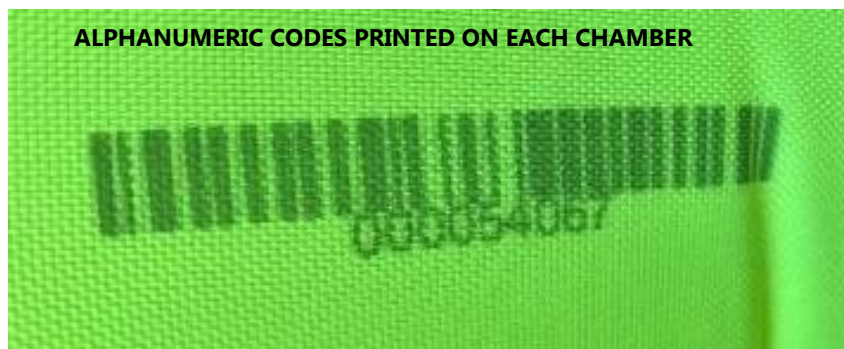


ESCLUSIVE SAFETY TECNOLOGIES

Safety at sea is our main priority. We manage all research, design and production processes with the utmost care so as to offer certified equipment for all nautical fields, with the highest production standards. All research and development activities are certified by the Department of Applied Science and Technology of the Polytechnic University of Turin, in accordance with EU regulations.

THE PRODUCTION PROCESS AND TRACEABILITY

With the aim of making inflatable life jackets more reliable, in 1994 Veleria San Giorgio introduced the Unique Product Code system. As the only manufacturer in the world to employ this type of technology, VSG is now able to identify all materials and individual components utilised through distinct alphanumeric codes.



CERTIFICATO N. 26/91/S
CERTIFICATE No.

SI CERTIFICA CHE IL SISTEMA DI GESTIONE PER LA QUALITÀ DI
IT IS HEREBY CERTIFIED THAT THE QUALITY MANAGEMENT SYSTEM OF

VELERIA SAN GIORGIO S.R.L.

VIA A DE GASPERI 37H 16030 Casarza Ligure (GE) ITALIA
NELLE SEGUENTI UNITÀ OPERATIVE / IN THE FOLLOWING OPERATIONAL UNITS

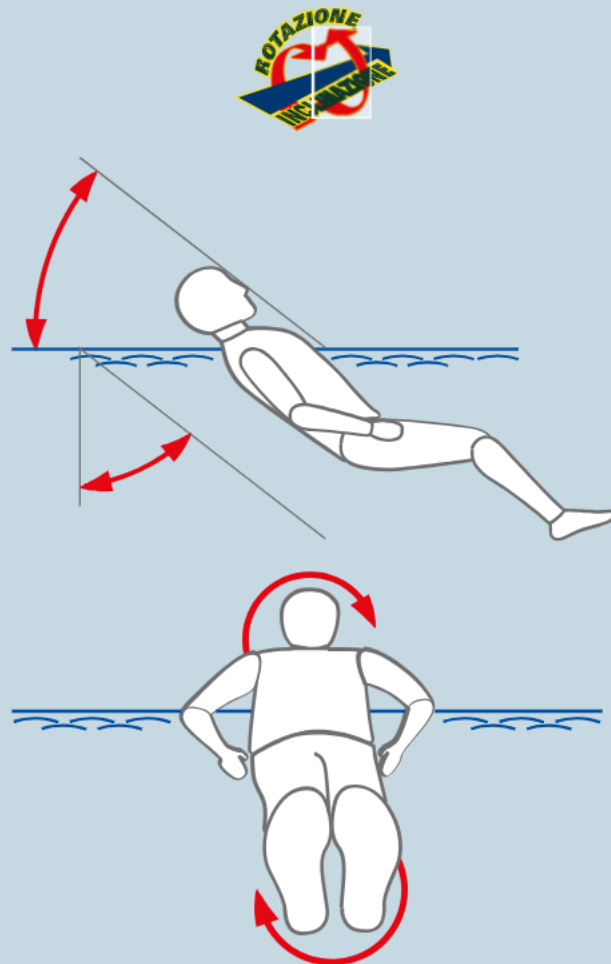
VIA A DE GASPERI 37H 16030 Casarza Ligure (GE) ITALIA

È CONFORME ALLA NORMA / IS IN COMPLIANCE WITH THE STANDARD
ISO 9001:2015

Production processes are controlled via software specially developed by VSG, covering 100% of production so each product can be traced back to its buyer with absolute precision. This drastically reduces manufacturing defects (less than 1/10000 of returns), guaranteeing each buyer a unique product in the truest sense of the word and - most importantly - the highest degree of safety when needed.

Thanks to their ergonomic features, our life jackets guarantee an optimal position in the water and great stability. In addition, the vests offer enough buoyancy to rotate and tilt an unconscious person, so as to always keep the airway out of the water.

Spin - tilt



WK 4 HARNESS SKIPPER MODULE

150/180/275 ISO
150/275 SOLAS

Inflatable life jacket certified per SOLAS M.E.D. and ISO 12402, with integrated ISO 12401 safety harness bearing a steel buckle and lateral quick-adjuster. Designed for professional and work activities carried out in the open sea and/or in adverse weather conditions, it allows the wearer to safely await rescue even in rough waters. A specific product for safe operation during onboard work activities and for professional fishers, coming with a cover of soft yet durable PVC. It is resistant to oils, mould, UV rays and abrasion.

Smart, functional and comfortable, thanks to its snug, carefully-detailed design. Engineered for maximum freedom and mobility on board during manoeuvres at sea.

Compatible with most fall-protection harnesses.

MAIN CHARACTERISTICS:

- Breathable mesh collar
- Adjustable back straps
- Zipper closure/opening with Quick Opening system
- Steel buckle with 316 stainless-steel lateral quick-adjuster
- Safety line attachment ring
- Rescue grab handle
- Lifting handle
- VHF straps
- Front pockets for personal items



275



ACTIVATOR
A M
SYSTEM



CODE	PRODUCT NAME	ATTIVATION	ATTIVATOR
02140/25/HX/WK/Y	MODULO WK 150 SOLAS	AUTOMATIC -DAA	UML MK5 X2
02141/25/HX/WK/Y	MODULO WK 150 SOLAS	AUTO – MAN -DAAM	UML MK5 - MICROMANUAL
02142/25/HX/WK/Y	MODULO WK 150 SOLAS	AUTOMATIC -SAA	UML MK5
02140/25/HX/H/WK/Y	MODULO WK 150 SOLAS	AUTOMATIC -DAA	HAMMAR MA1/EC X2
02142/25/HX/H/WK/Y	MODULO WK 150 SOLAS	AUTOMATIC -SAA	HAMMAR MA1/EC
02130/25/HX/WK/Y	MODULO WK 275 SOLAS	AUTOMATIC -DAA	UML MK5 X2
02131/25/HX/WK/Y	MODULO WK 275 SOLAS	AUTO – MAN -DAAM	UML MK5 - MICROMANUAL
02132/25/HX/WK/Y	MODULO WK 275 SOLAS	AUTOMATIC -SAA	UML MK5
02130/25/HX/H/WK/Y	MODULO WK 275 SOLAS	AUTOMATIC -DAA	HAMMAR MA1/EC X2
02131/25/HX/H/WK/Y	MODULO WK 275 SOLAS	AUTO – MAN -DAAM	HAMMAR MA1/EC - M1
02132/25/HX/H/WK/Y	MODULO WK 275 SOLAS	AUTOMATIC -SAA	HAMMAR MA1/EC
09235/25/HX/WK/Y	SKIPPER WK 150 ISO	AUTOMATIC	UML MK5
09236/25/HX/WK/Y	SKIPPER WK 150 ISO	MANUAL	UML MICROMANUAL
09235/25/HX/H/WK/Y	SKIPPER WK 150 ISO	AUTOMATIC	HAMMAR MA1/EC
09236/25/HX/H/WK/Y	SKIPPER WK 150 ISO	MANUAL	M1
09238/25/HX/WK/Y	SKIPPER WK 180 ISO	MANUAL	UML MICROMANUAL
09237/25/HX/WK/Y	SKIPPER WK 180 ISO	AUTOMATIC	UML MK5
09238/25/HX/H/WK/Y	SKIPPER WK 180 ISO	MANUAL	M1
09237/25/HX/H/WK/Y	SKIPPER WK 180 ISO	AUTOMATIC	HAMMAR MA1/EC
09676/25/HX/WK/Y	SKIPPER WK 275 ISO	MANUAL	UML MICROMANUAL
09675/25/HX/WK/Y	SKIPPER WK 275 ISO	AUTOMATIC	UML MK5
09676/25/HX/H/WK/Y	SKIPPER WK 275 ISO	MANUAL	M1
09675/25/HX/H/WK/Y	SKIPPER WK 275 ISO	AUTOMATIC	HAMMAR MA1/EC

FEATURES	
Type	Inflatable life jacket
Activators	UML MK5 : (02140/25/HX/WK/Y - 02141/25/HX/WK/Y - 02142/25/HX/WK/Y - 02130/25/HX/WK/Y - 02131/25/HX/WK/Y - 02132/25/HX/WK/Y - 09235/25/HX/WK/Y - 09237/25/HX/WK/Y - 09675/25/HX/WK/Y) UML Micro Manual: (02141/25/HX/WK/Y - 02131/25/HX/WK/Y - 09236/25/HX/WK/Y - 09238/25/HX/WK/Y - 09676/25/HX/WK/Y) Hammar MA1 EC: (02140/25/HX/H/WK/Y - 02142/25/HX/H/WK/Y - 02130/25/HX/H/WK/Y - 02131/25/HX/H/WK/Y - 02132/25/HX/H/WK/Y - 09235/25/HX/H/WK/Y - 09237/25/HX/H/WK/Y - 09675/25/HX/H/WK/Y) M1: (02131/25/HX/H/WK/Y - 09236/25/HX/H/WK/Y - 09238/25/HX/H/WK/Y - 09676/25/HX/H/WK/Y) Oral tube on all versions
Canister	33 g, 1/2" GAS thread : (02140/25/HX/WK/Y - 02141/25/HX/WK/Y - 02142/25/HX/WK/Y - 02140/25/HX/H/WK/Y - 02142/25/HX/H/WK/Y - 09235/25/HX/WK/Y - 09236/25/HX/WK/Y - 09235/25/HX/H/WK/Y - 09236/25/HX/H/WK/Y) 38 g, 1/2" GAS thread : (09238/25/HX/WK/Y - 09237/25/HX/WK/Y - 09238/25/HX/H/WK/Y - 09237/25/HX/H/WK/Y) 60 g, 1/2" GAS thread : (02130/25/HX/WK/Y - 02131/25/HX/WK/Y - 02132/25/HX/WK/Y - 02130/25/HX/H/WK/Y - 02131/25/HX/H/WK/Y - 02132/25/HX/H/WK/Y - 09676/25/HX/WK/Y - 09675/25/HX/WK/Y - 09676/25/HX/H/WK/Y - 09675/25/HX/H/WK/Y)
Actual buoyancy	ISO 150 N: 09235/25/HX/WK/Y - 09236/25/HX/WK/Y - 09235/25/HX/H/WK/Y - 09236/25/HX/H/WK/Y ISO 180 N: 09238/25/HX/WK/Y - 09237/25/HX/WK/Y - 09238/25/HX/H/WK/Y - 09237/25/HX/H/WK/Y ISO 275 N: 09676/25/HX/WK/Y - 09675/25/HX/WK/Y - 09676/25/HX/H/WK/Y - 09675/25/HX/H/WK/Y SOLAS 150 N: 02140/25/HX/WK/Y - 02141/25/HX/WK/Y - 02142/25/HX/WK/Y - 02140/25/HX/H/WK/Y - 02142/25/HX/H/WK/Y SOLAS 275 N: 02130/25/HX/WK/Y - 02131/25/HX/WK/Y - 02132/25/HX/WK/Y - 02130/25/HX/H/WK/Y - 02131/25/HX/H/WK/Y - 02132/25/HX/H/WK/Y
Class	150N:02140/25/HX/WK/Y - 02141/25/HX/WK/Y - 02142/25/HX/WK/Y - 02140/25/HX/H/WK/Y - 02142/25/HX/H/WK/Y - 09235/25/HX/WK/Y - 09236/25/HX/WK/Y - 09235/25/HX/H/WK/Y - 09236/25/HX/H/WK/Y 180N:09238/25/HX/WK/Y - 09237/25/HX/WK/Y - 09238/25/HX/H/WK/Y - 09237/25/HX/H/WK/Y 275N:02130/25/HX/WK/Y - 02131/25/HX/WK/Y - 02132/25/HX/WK/Y - 02130/25/HX/H/WK/Y - 02131/25/HX/H/WK/Y - 02132/25/HX/H/WK/Y - 09676/25/HX/WK/Y - 09675/25/HX/WK/Y - 09676/25/HX/H/WK/Y - 09675/25/HX/H/WK/Y
Closure system	Safety harness with 45 mm webbing and side adjuster, closure system with 316 stainless steel buckles, and ring for safety strap
Certifications	ISO 12402-3, ISO 12401 - SOLAS M.E.D. - ISO 12401
Size	Adult
Supported weight	> 40 kg
Waist circumference	80 - 125 cm
Case	Durable, soft fabric with PVC coating
Bladder	PA 420 PU-coated material, fluorescent yellow color
Product packaging	200D PL carrying bag
Product dimensions	50 x 33 x 9 cm +/- 5%
Product weight	02140/25/HX/WK/Y (1960 g Approx) 02141/25/HX/WK/Y (1903 g Approx) 02142/25/HX/H/WK/Y (1735 g Approx) 02140/25/HX/H/WK/Y (1954 g Approx) 02142/25/HX/WK/H/WK/Y (1731 g Approx) 02130/25/HX/WK/Y (2358 g Approx) 02131/25/HX/WK/Y (2301 g Approx) 02132/25/HX/WK/Y (2015 g Approx) 02130/25/HX/H/WK/Y (2351 g Approx) 02131/25/HX/H/WK/Y (2313 g Approx) 02132/25/HX/H/WK/Y (2011 g Approx) 09235/25/HX/WK/Y (1553 g Approx) 09236/25/HX/WK/Y (1495 g Approx) 09235/25/HX/H/WK/Y (1549 g Approx) 09236/25/HX/WK/Y (1511 g Approx) 09238/25/HX/WK/Y (1530 g Approx) 09237/25/HX/WK/Y (1587 g Approx) 09238/25/HX/H/WK/Y (1546 g Approx) 09237/25/HX/H/WK/Y (1583 g Approx) 09676/25/HX/WK/Y (1734 g Approx) 09675/25/HX/WK/Y (1791 g Approx) 0967/25/HX/H/WK/Y (1750 g Approx) 09675/25/HX/H/WK/Y (1787 g Approx)
Packaging	Box 60 x 40 x 40 cm (9 pcs for 150N - 180N) (7 pcs for 275N)
Inspection	ISO: Every 24 months - SOLAS: Every 12 months
Optional accessories	Spray hood, automatic emergency light, crotch strap, safety line
Included accessories	Whistle, rearming kit, double crotch strap
Veleria San Giorgio reserves the right to change technical specifications without prior notice	

HARNESS AND ACCESSORIES

Device compatible with most fall-protection harnesses, which can be attached using dedicated fittings and worn comfortably.

ANTI-TRAUMA SUSPENSION

Device designed to reduce the negative effects of suspension trauma in the event of a fall, by connecting the straps contained within the pouches.

It can be integrated with any harness strap.

Compatible with our fall-protection harness system and with most certified harnesses.



ANTI-SUSPENSION TRAUMA

Hook

Handles



BACK

Cover

Steel buckle and ring

Waist strap

Safety fall-protection harness



FRONT

Single flotation chamber for ISO dual-compartment SOLAS life jackets, featuring the X3D single-compartment rotation system in PA 420 PU-coated fabric with electronically-controlled high-frequency welds. Designed to follow the body's ergonomics and optimise positioning in the water. Thanks to its distinctive V-shape, this ensures immediate rotation of the body and, with the "fin" structure at the nape of the neck, provides excellent support and perfect head stability for the wearer. The design of this chamber guarantees the best height of the airway above water in the inflatable life jacket category.

ACTIVATION SYSTEMS

- Automatic - Upon falling into the sea, the system is submerged and automatically inflates the flotation chamber within 5 seconds. Automatic activation is possible using the UML MK5 or HAMMAR saline actuator, through the dissolution of a water-soluble tablet, or via the HAMMAR hydrostatic system.
- Manual - The system is activated by pulling the designated lever. It is supplied with the UML MICROMANUAL or HAMMAR manual actuator and is activated exclusively by hand.
- Oral - This type of inflation occurs through the dedicated mouth tube with non-return valve and protective cap. To inflate the chamber, simply blow into the mouth tube.

Reflective tape

Mouth tube

Actuator

LED light



SOLAS CHAMBER



ISO CHAMBER

