

FLAT WHISTLE

Art. 25180

Mandatory accessory - ISO 12402-8 certified

Provides an emergency sound signal; can be attached to all rigid and inflatable life jackets via a lanyard or the built-in fastening clip, which ensures excellent grip on fabrics such as bags and clothing.

The whistle produces over 100 dB of sound, measured at a distance of (5 ± 0.1) m directly in front of it. The predominant frequency is multi-tone at (2 ± 1) kHz: one of the fundamental tones ranges between 1952 Hz and 1979 Hz, thus falling within the permitted range of 1000–3000 Hz, while a second component lies between 2588 Hz and 2775 Hz.

“Multi-tone” means that the whistle has two chambers that emit different fundamental frequencies..

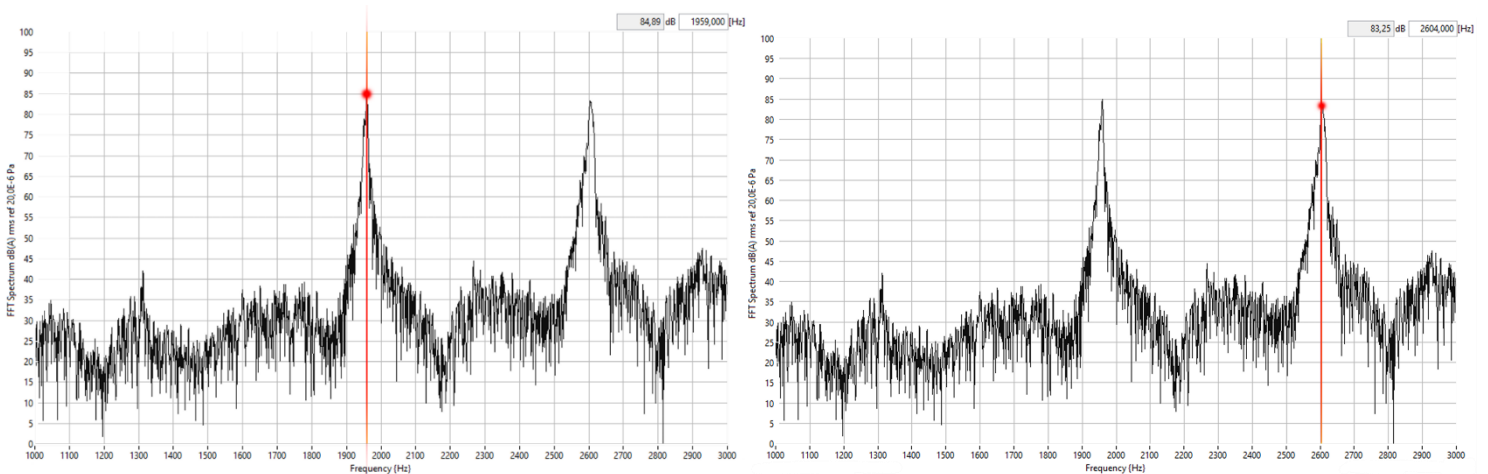


Art. 25180

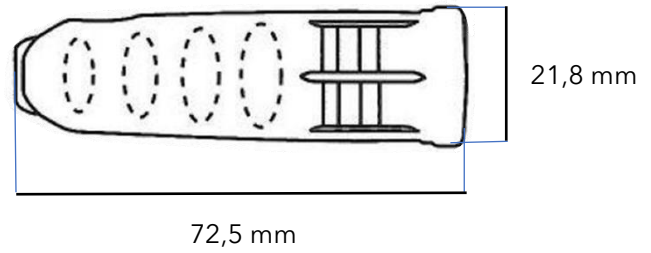


Art. 25181

Graphical representation of overlapping multi-tone frequencies, which increase the intensity and recognizability of the sound even at considerable distances and in the presence of ambient noise.



DIMENSIONS



Positioning on a rigid life jacket



Positioning on an inflatable life jacket

FEATURES	
Code: 25180 - 25181	
Dimensions	72,5 x 18,9 mm
Color	art: 25180 – 25181 (orange)
Material	PP Polipropilene
Buoyant	yes
Corrosion-resistant	yes



Remember to book a periodic inspection by emailing info@valeriasangiorgio.com or on the website.

For more information, please contact us by calling +39 0185 467701 or via www.valeriasangiorgio.com.

To buy or learn more about this product, please scan the QR Code or visit www.valeriasangiorgio.com.

LIFE JACKETS AND LIFEBELTS, FLAGS AND BANNERS, TECHNICAL ITEMS, PERSONAL PROTECTIVE EQUIPMENT AND SAFETY GEAR FOR CIVILIAN AND MILITARY FIELDS Via Alcide De Gasperi, 37H - 16030 Casarza Ligure - Genoa - Italy Tel. +39 0185 467701 - Fax +39 0185 467050 - info@valeriasangiorgio.com - www.valeriasangiorgio.com



LIFEJACKET MANUFACTURER

